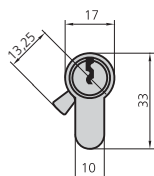


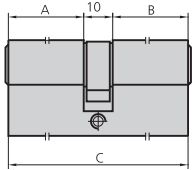




CARACTERÍSTICAS

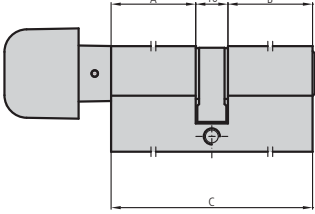
- Cuerpo de latón
- Rotores de latón
- Leva corta de 13,25 mm
- 5 pitones
- 3 llaves

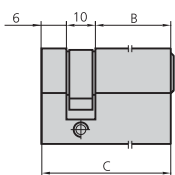
ACCESORIOS OPCIONALES



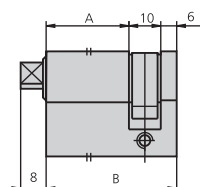
DESCRIPCIÓN	REF.	MEDIDAS			ACABADOS	UDS	
		A	B	C			
 <ul style="list-style-type: none"> • Cilindro doble 	5990/2525/3	26	26	62	LP	1	
	5990/2525/4	26	26	62	LN	1	
	5990/2530/3	26	31	67	LP	1	
	5990/2530/4	26	31	67	LN	1	
	5990/2535/3	26	36	72	LP	1	
	5990/2535/4	26	36	72	LN	1	
	5990/3030/3	31	31	72	LP	1	
	5990/3030/4	31	31	72	LN	1	
	5990/2540/3	26	41	77	LP	1	
	5990/2540/4	26	41	77	LN	1	
	5990/3035/3	31	36	77	LP	1	
	5990/3035/4	31	36	77	LN	1	
	5990/2545/3	26	46	82	LP	1	
	5990/2545/4	26	46	82	LN	1	
	5990/3040/3	31	41	82	LP	1	
	5990/3040/4	31	41	82	LN	1	
	5990/3535/3	36	36	82	LP	1	
	5990/3535/4	36	36	82	LN	1	
	5990/2550/3	26	51	87	LP	1	
	5990/2550/4	26	51	87	LN	1	
	5990/3540/3	36	41	87	LP	1	
	5990/3540/4	36	41	87	LN	1	
	5990/3045/3	31	46	87	LP	1	
	5990/3045/4	31	46	87	LN	1	
	5990/2555/3	26	56	92	LP	1	
	5990/2555/4	26	56	92	LN	1	
	5990/3050/3	31	51	92	LP	1	
	5990/3050/4	31	51	92	LN	1	
	5990/3545/3	36	46	92	LP	1	
	5990/3545/4	36	46	92	LN	1	
	5990/4040/3	41	41	92	LP	1	
	5990/4040/4	41	41	92	LN	1	
	5990/2560/3	26	61	97	LP	1	
	5990/2560/4	26	61	97	LN	1	
	5990/3055/3	31	56	97	LP	1	
	5990/3055/4	31	56	97	LN	1	
	5990/2565/3	26	66	102	LP	1	
	5990/2565/4	26	66	102	LN	1	

DESCRIPCIÓN	REF.	MEDIDAS			ACABADOS	UDS	
		A	B	C			
	5990/3060/3	31	61	102	LP	1	
	5990/3060/4	31	61	102	LN	1	
	5990/3555/3	36	56	102	LP	1	
	5990/3555/4	36	56	102	LN	1	
	5990/4050/3	41	51	102	LP	1	
	5990/4050/4	41	51	102	LN	1	
	5990/4545/3	46	46	102	LP	1	
	5990/4545/4	46	46	102	LN	1	
	5990/4055/3	41	56	107	LP	1	
	5990/4055/4	41	56	107	LN	1	
	5990/2575/3	26	76	112	LP	1	
	5990/2575/4	26	76	112	LN	1	
	5990/3565/3	36	66	112	LP	1	
	5990/3565/4	36	66	112	LN	1	
	5990/4060/3	41	61	112	LP	1	
	5990/4060/4	41	61	112	LN	1	
	5990/4555/3	46	56	112	LP	1	
	5990/4555/4	46	56	112	LN	1	
	5990/5050/3	51	51	112	LP	1	
	5990/5050/4	51	51	112	LN	1	
	5990/2585/3	26	86	122	LP	1	
	5990/2585/4	26	86	122	LN	1	
	5990/3080/3	31	81	122	LP	1	
	5990/3080/4	31	81	122	LN	1	
	5990/3575/3	36	76	122	LP	1	
	5990/3575/4	36	76	122	LN	1	
	5990/4070/3	41	71	122	LP	1	
	5990/4070/4	41	71	122	LN	1	
	5990/5555/3	56	56	122	LP	1	
	5990/5555/4	56	56	122	LN	1	
	5990/2595/3	26	96	132	LP	1	
	5990/2595/4	26	96	132	LN	1	
	5990/4080/3	41	81	132	LP	1	
	5990/4080/4	41	81	132	LN	1	
	5990/6060/3	61	61	132	LP	1	
	5990/6060/4	61	61	132	LN	1	
	5990/3595/3	36	96	142	LP	1	
	5990/3595/4	36	96	142	LN	1	
	5990/6565/3	66	66	142	LP	1	
	5990/6565/4	66	66	142	LN	1	
	5990/7070/3	71	71	152	LP	1	
	5990/7070/4	71	71	152	LN	1	
	5990/7575/3	76	76	162	LP	1	
	5990/7575/4	76	76	162	LN	1	

DESCRIPCIÓN	REF.	MEDIDAS			ACABADOS	UDS
		A	B	C		
 <ul style="list-style-type: none"> Cilindro con pomo 	590PM2525/3	26	26	62	LP	1
	590PM2525/4	26	26	62	LN	1
	590PM2530/3	26	31	67	LP	1
	590PM2530/4	26	31	67	LN	1
	590PM2535/3	26	36	72	LP	1
	590PM2535/4	26	36	72	LN	1
	590PM3030/3	31	31	72	LP	1
	590PM3030/4	31	31	72	LN	1
	590PM3525/3	36	26	72	LP	1
	590PM3525/4	36	26	72	LN	1
	590PM2540/3	26	41	77	LP	1
	590PM2540/4	26	41	77	LN	1
	590PM2545/3	26	46	82	LP	1
	590PM2545/4	26	46	82	LN	1
	590PM3535/3	36	36	82	LP	1
	590PM3535/4	36	36	82	LN	1
	590PM2550/3	26	51	87	LP	1
	590PM2550/4	26	51	87	LN	1
	590PM3045/3	31	46	87	LP	1
	590PM3045/4	31	46	87	LN	1
	590PM3540/3	36	41	87	LP	1
	590PM3540/4	36	41	87	LN	1
	590PM2555/3	26	56	92	LP	1
	590PM2555/4	26	56	92	LN	1
	590PM3545/3	36	46	92	LP	1
	590PM3545/4	36	46	92	LN	1
	590PM2560/3	26	61	97	LP	1
	590PM2560/4	26	61	97	LN	1
	590PM2565/3	26	66	102	LP	1
	590PM2565/4	26	66	102	LN	1



<ul style="list-style-type: none"> Medio cilindro 	5990T40/3	26	42	LP	1
	5990T40/4	26	42	LN	1
	5990T45/3	31	47	LP	1
	5990T45/4	31	47	LN	1
	5990T50/3	36	52	LP	1
	5990T50/4	36	52	LN	1
	5990T55/3	41	57	LP	1
	5990T55/4	41	57	LN	1
	5990T60/3	46	62	LP	1
	5990T60/4	46	62	LN	1
	5990T65/3	51	67	LP	1
	5990T65/4	51	67	LN	1
	5990T70/3	56	72	LP	1
	5990T70/4	56	72	LN	1



<ul style="list-style-type: none"> Medio cilindro Triángulo por un lado 	5990PT2505/3	26	42	LP	1
	5990PT2505/4	26	42	LN	1

CILINDRO EUROPERFIL NORMAL LEVA CORTA
SERIE 590PM, 5990T, 5990PT

DESCRIPCIÓN	REF.	MEDIDAS			ACABADOS	UDS	
		A	B	C			
<ul style="list-style-type: none"> • Doble cilindro • Llave por un lado y triángulo por el otro 	5990PT2525/3	26	26	62	LP	1	
	5990PT2525/4	26	26	62	LN	1	
	5990PT2535/3	26	36	72	LP	1	
	5990PT2535/4	26	36	72	LN	1	
	5990PT2545/3	26	46	82	LP	1	
	5990PT2545/4	26	46	82	LN	1	

<ul style="list-style-type: none"> • Doble cilindro • Triángulo por un lado y pomo por el otro 	590PM25T25/3	26	26	62	LP	1	
	590PM25T25/4	26	26	62	LN	1	
	590PM30T30/3	31	31	72	LP	1	
	590PM30T30/4	31	31	72	LN	1	
	590PM35T25/3	36	26	72	LP	1	
	590PM35T25/4	36	26	72	LN	1	
	590PM35T35/3	36	36	82	LP	1	
	590PM35T35/4	36	36	82	LN	1	
	590PM30T45/3	31	46	87	LP	1	
	590PM30T45/4	31	46	87	LN	1	